

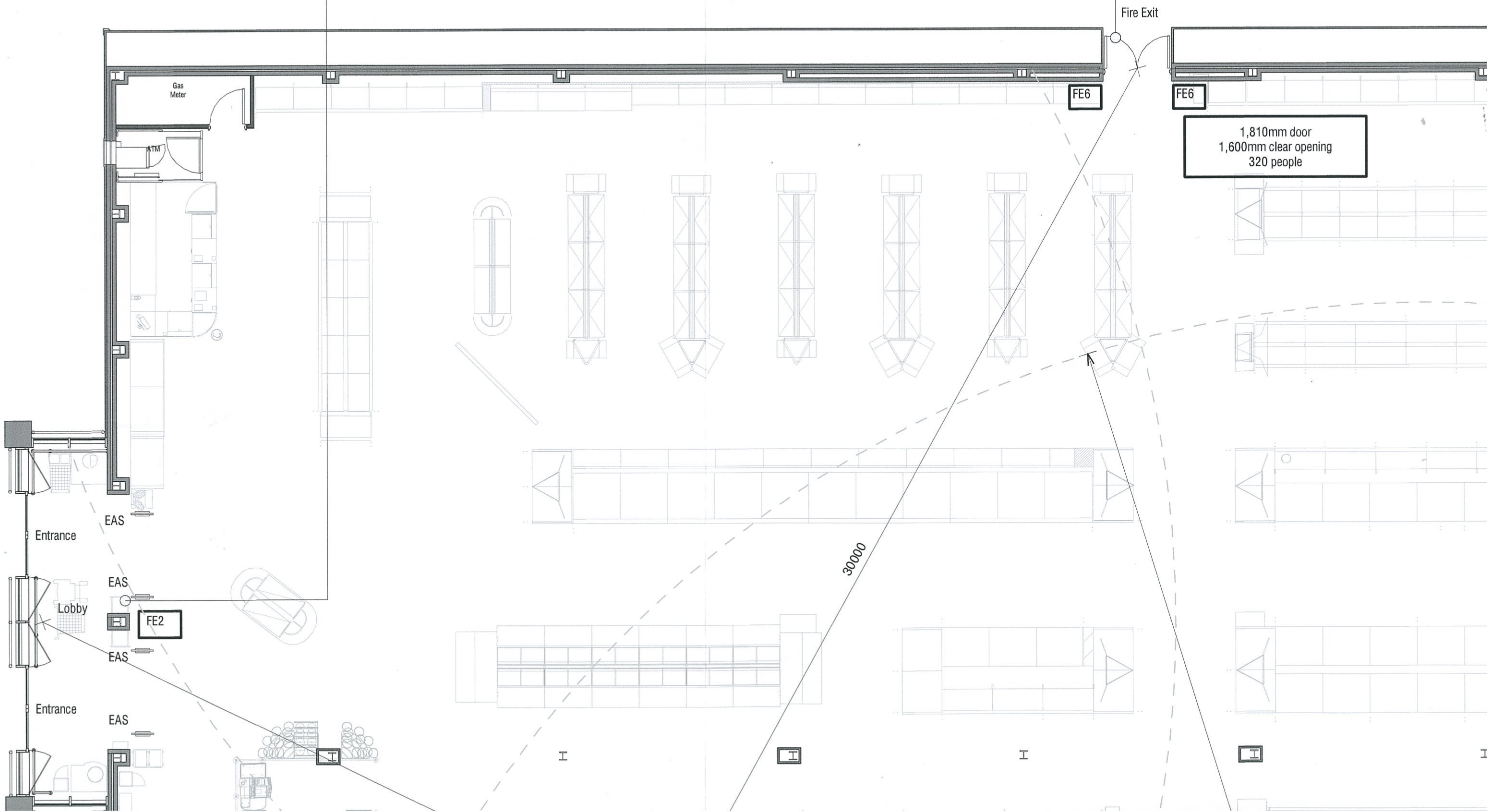
Fire signage for fire exit from sales floor:

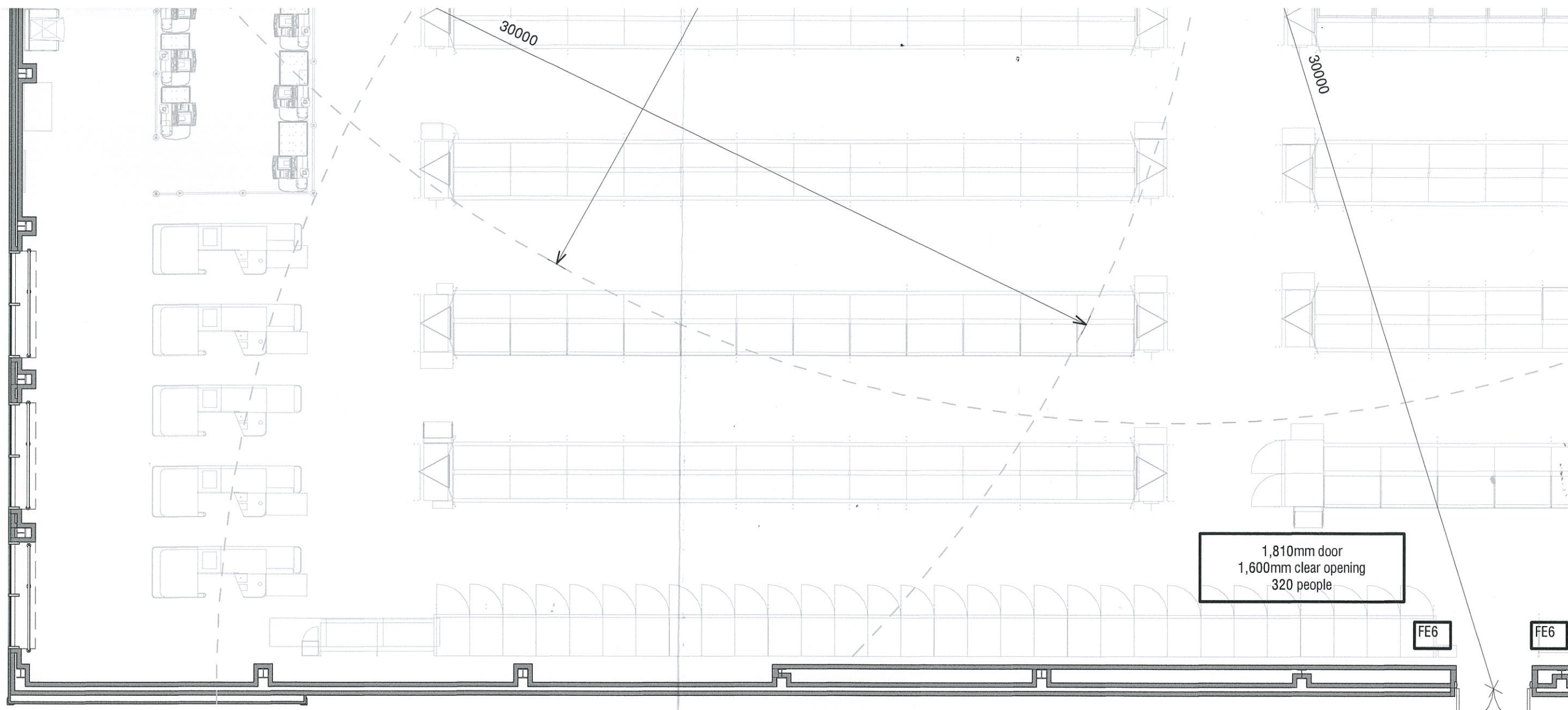


Fire signage for fire exit from sales floor:



✓ Push bar to open





1,810mm door  
1,600mm clear opening  
320 people

FE6

FE6

Fire Exit

Licensing Plan Scale 1:100

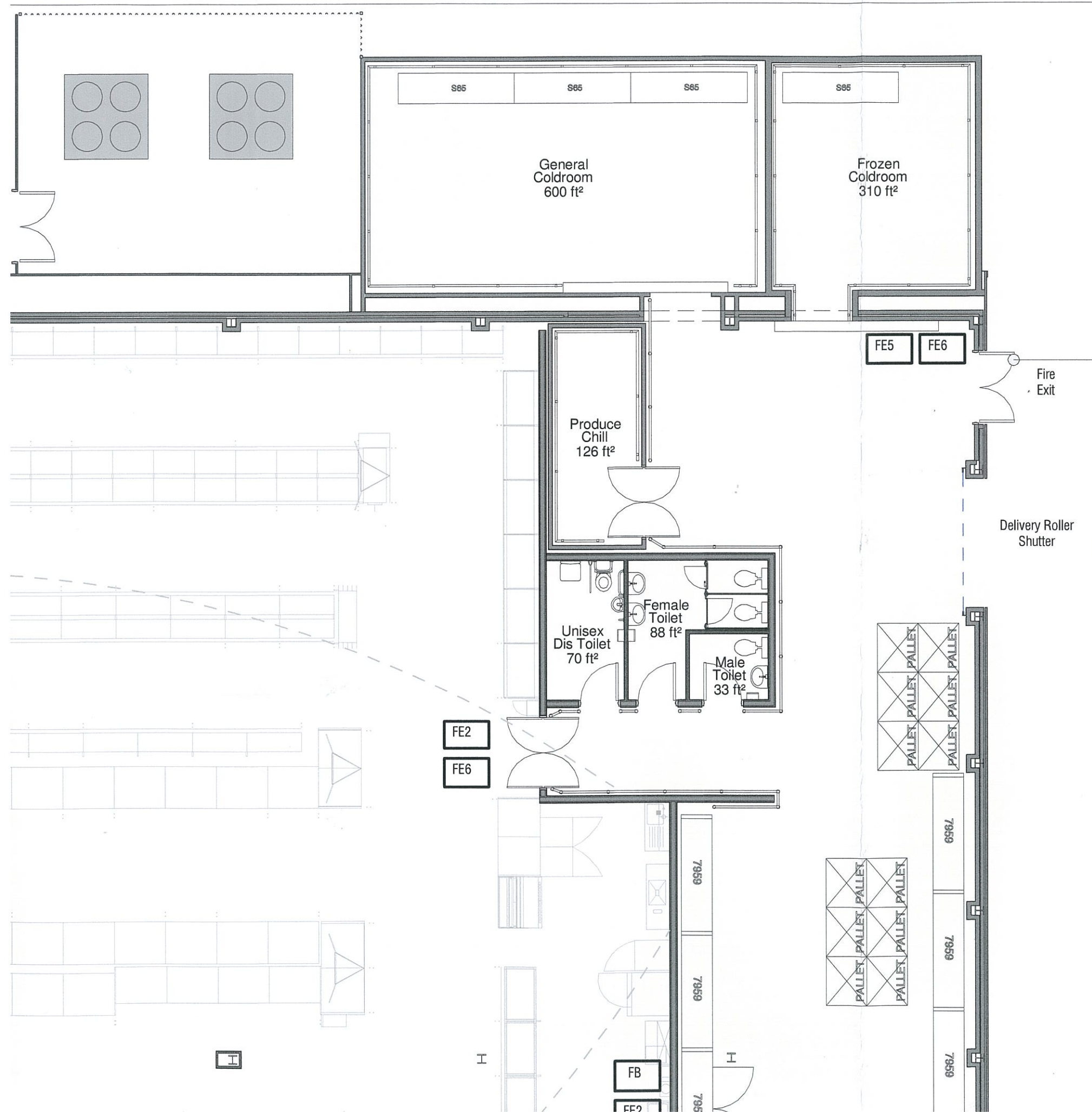
Fire signage for fire exit from sal



NOTES:

Rev	Date	Description	By	PM
REVISIONS				

LICENSING APPLICATION



**NOTES:**

**PROTECTION AND WARNING:**

The fire alarm and detection system will be designed and installed in accordance with BS 5839: Part 1:2002, For details refer to M&E consultant's drawings and specification. Manual call points will be provided to the Sales Floor with automatic detection provided to all other areas of the store. The fire alarm system will be activated by one of the following alarm cues:

- Activation of a manual call point.
- Activation of a smoke/ heat detector head.

For details of emergency lighting, smoke and heat detectors refer to M&E consultant's drawings and specifications.

**FIRE EXITS AND MEANS OF ESCAPE:**

Travel distances within the Sales Floor are based on 45m in two directions. For the purpose of the Fire Strategy Plan direct distances (2/3rds of travel distance) have been used.

All fire exit doors to be fitted with 'push bar' panic release mechanisms and self adhesive emergency exit signage. Illuminated fire exit sign to be installed above all fire exit doors at 4200mm above finished floor level. All fire signage on glazed escape doors to be double sided.

**FIRE EXTINGUISHERS:**

Fire extinguishers are to be located on the sales floor, adjacent all fire exits and escape routes, within the Warehouse area, customer/ colleagues restaurants, Bakery, Home shopping area and colleagues offices.

All fire extinguishers to be on stands with carrying handle approx. 1000mm above finished floor level. Locations shown are indicative only, final location of all extinguishers to be co-ordinated with sales floor plan and all other fittings.

**OCCUPANCY (Sales Floor):**

Occupancy levels to the Sales Floor area are based upon gross floor area divided by 4sq.m per person.

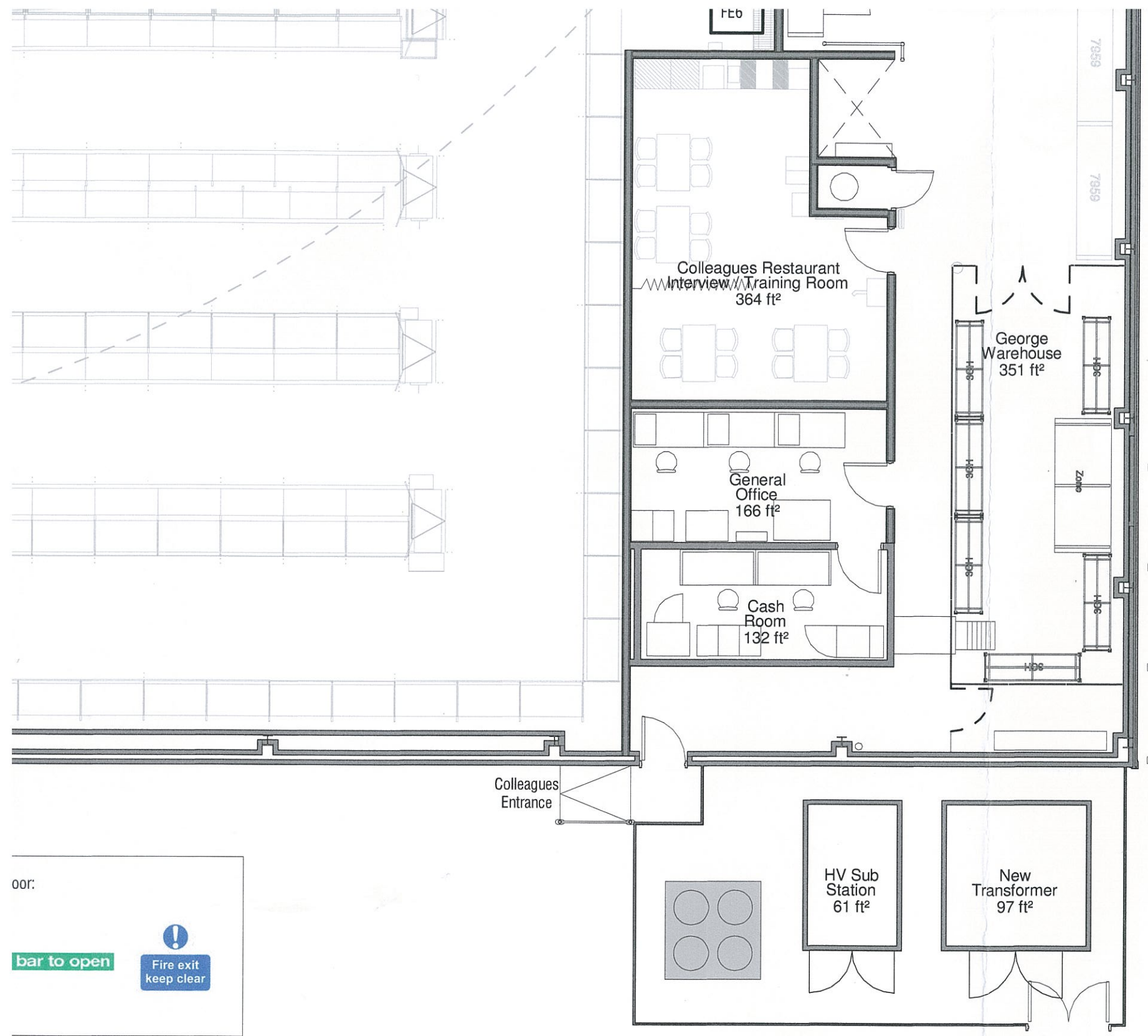
18,880sq.ft (gross sales area) = 1,754sq.m  
 1,754sq.m / 4sq.m = 438 persons.

**SALES FLOOR DOOR WIDTH CALCULATION:**

5mm per person x Sales Floor Occupancy.  
 5 x 438 = 2,190mm total clear exit width (TCW) required (discounting main entrance doors).

**LEGEND:**

- FE2** CO2 fire extinguisher (2kg).
- FE5** CO2 fire extinguisher (5kg).
- FE6** Foam fire extinguisher.
- FEF** Wet chemical (Class F) fire extinguisher (6 Litres).



Fire blanket.

**FIRE SAFETY SIGNAGE:**



600x400mm internally illuminated exit, positioned central above exit doors. top of sign to be 4200mm above finished floor level.



200x300mm rigid plastic "fire action sign", screwed to wall adjacent fire exit doors. Centre of sign to be 350mm from edge of door frame and 1380mm above finished floor level.



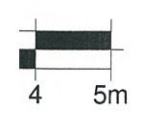
600x100mm self adhesive vinyl "push bar to open" sign, positioned central to door leaf directly above panic bar.



250x 125mm self adhesive vinyl "fire exit keep clear" sign, positioned central to door leaf. Centre of sign to be 1500mm above finished floor level.



door:



CLIENT  
**ASDA STORES LTD**

TITLE  
**Asda Paignton**  
**Proposed Ground Floor Plan**  
**BWS Licensing Plan**



HEAD OFFICE  
FURZEHALL FARM, WICKHAM ROAD  
FAREHAM, HAMPSHIRE, PO16 7JH  
T: 01329 283 225  
LEEDS OFFICE  
SUITE 16, CALLS WHARF,  
2 THE CALLS, LEEDS, LS2 7JU  
T: 0113 237 2750

E: EMAIL@HGP-ARCHITECTS.CO.UK  
W: WWW.HGP-ARCHITECTS.CO.UK

Scale: As indicated @A1  
Date: Feb 2012 ©  
Drawn by: BF  
Checked by: SPG

Drawing No.:  
11.101. A(100)00\_01

Revision:  
0



HGP Architects Ltd.  
Copyright Reserved  
Check dim. on site.